



Care | Delivery | Unity | Agility | Accountability | Trust



## 16 Whitelea Court

, Kilmacolm, PA13 4LA

**Offers over £172,000**



Welcome to this charming Ground floor flat located in the back water setting of Whitelea Court, Kilmacolm. This flat offers a delightful living experience, perfect for those seeking comfort and convenience, sure to appeal to a wide variety of buyers including downsizers looking for good sized rooms.

The flat features a spacious Lounge with patio doors to the rear, ideal for entertaining guests or enjoying a quiet evening in. With two generously sized bedrooms, both have a full wall of inbuilt wardrobes and the master has an ensuite shower room, there is ample space for relaxation and rest. The property also has a 3 piece family bathroom. Recently refitted stylish modern kitchen has white fronted wall and floor units, complimenting work tops and ample space for a table and chairs. Integrated dishwasher, washer dryer, gas hob, electric under oven, extractor hood and fridge freezer.

One of the standout features of this flat is its location, providing a peaceful retreat from the hustle and bustle of everyday life. Despite its tranquil surroundings, you will find yourself just a stone's throw away from local shops, making it easy to access everyday amenities.



Reception Hallway

Lounge 15'1" x 14'9" @max. (4.6 x 4.5 @max.)

Kitchen 9'9" x 14'1"@ max (2.98 x 4.30@ max)

Bedroom 1 13'1" x 10'10" tfow (4.01 x 3.32 tfow)

Ensuite

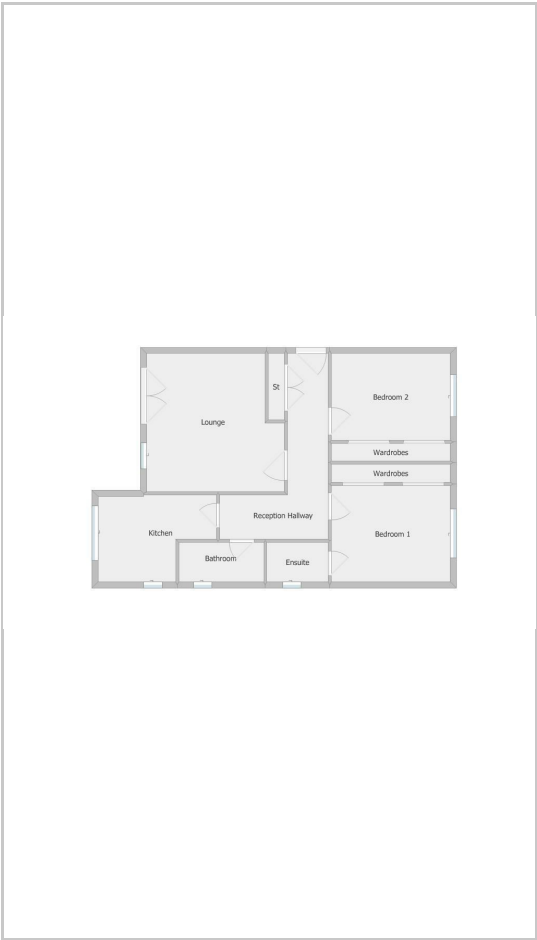
Bedroom 2 9'3" tfow x 13'1" (2.83 tfow x 3.99)

Bathroom 6'2" x 6'0" (1.89 x 1.83)

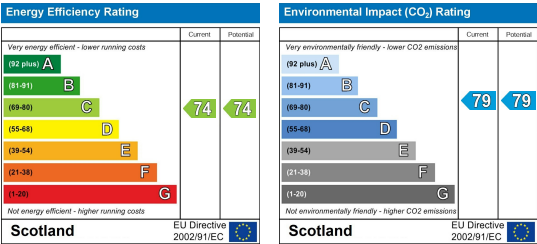
Area Map



Floor Plans



Energy Efficiency Graph



These particulars, whilst believed to be accurate are set out as a general outline only for guidance and do not constitute any part of an offer or contract. Intending purchasers should not rely on them as statements of representation of fact, but must satisfy themselves by inspection or otherwise as to their accuracy. No person in this firms employment has the authority to make or give any representation or warranty in respect of the property.